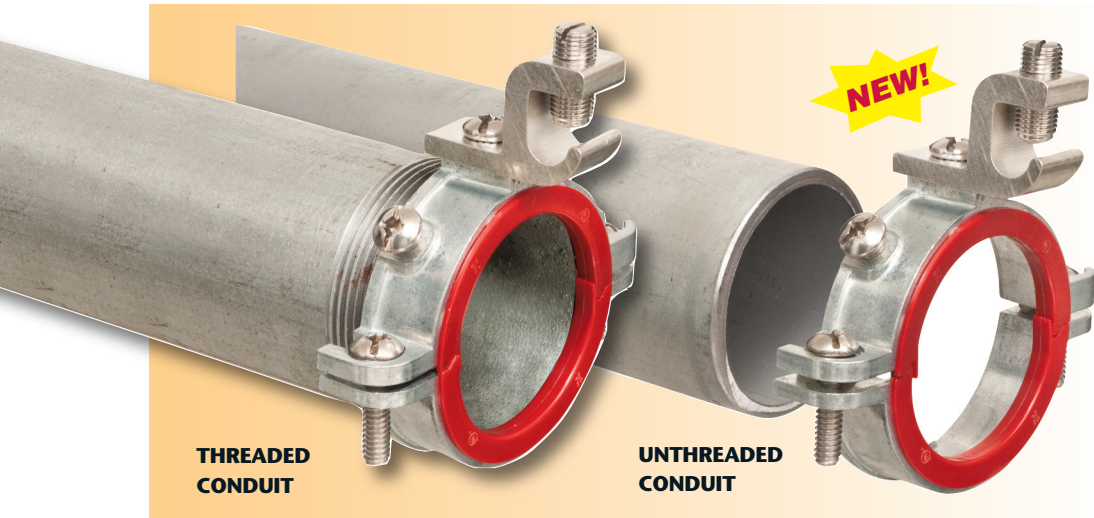


**NEW!**

# Split Grounding Bushings

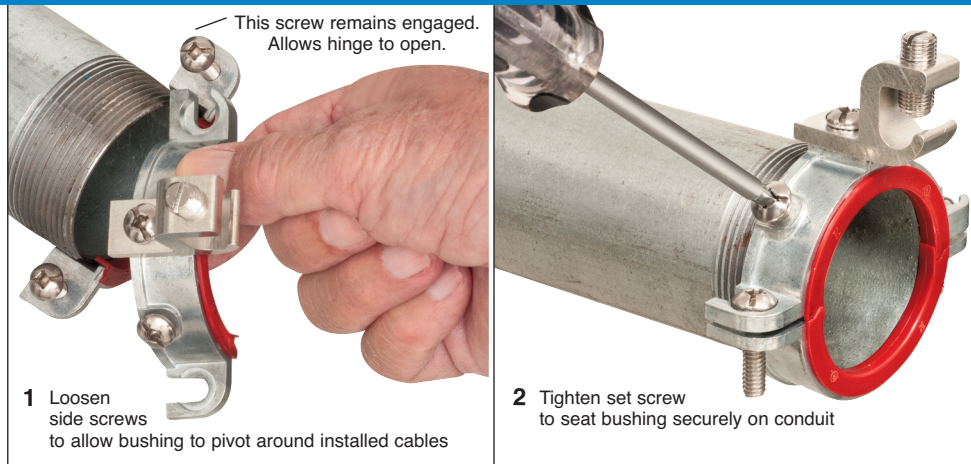
Easy to use on Threaded or Unthreaded Rigid/IMC • Rigid • EMT Connectors



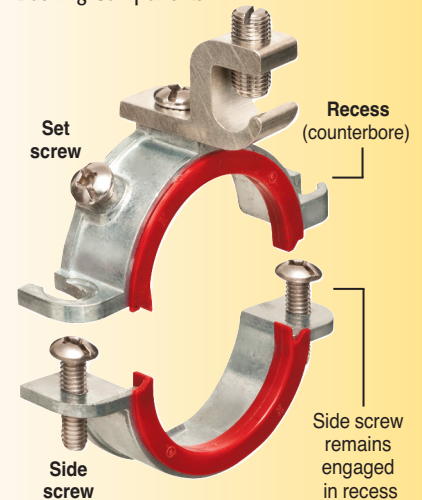
Arlington's 550 series zinc diecast split grounding bushings deliver convenience and time-savings. They're split to allow the addition of a bushing AFTER conductors are installed in the conduit.

- Easy installation on threaded or unthreaded Rigid/IMC
- Compatible with EMT - 2-1/2" to 4" trade sizes, and EMT threaded fittings
- Available in multiple sizes
- Ships Assembled

**EASY TO INSTALL on THREADED and UNTHREADED RIGID**  
*...COMPATIBLE WITH EMT FITTINGS*



Bushing Components

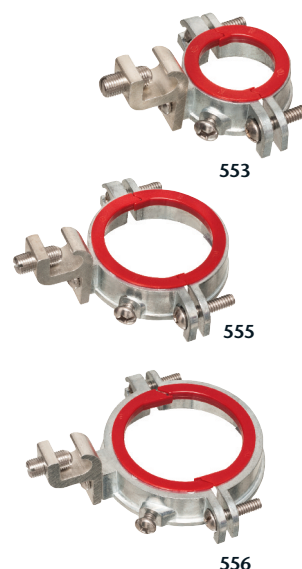


**1** Loosen side screws to allow bushing to pivot around installed cables

**2** Tighten set screw to seat bushing securely on conduit

Patent pending

CATALOG NUMBER	UPC/DCI/NAED MFG. #018997	TRADE SIZE	GROUND WIRE MIN	GROUND WIRE MAX	UNIT PKG	STD PKG
550	99306	1/2"	14	4	25	100
551	99307	3/4"	14	4	25	100
552	99308	1"	14	4	25	100
553	99309	1-1/4"	14	#1/0	20	80
554	99310	1-1/2"	14	#1/0	20	80
555	99311	2"	14	#1/0	10	50
556	99312	2-1/2"	14	#2/0	5	20
556250	99313	2-1/2"	6	250MCM	10	10
557	99314	3"	14	#2/0	5	20
557250	99315	3"	6	250MCM	10	10
558	99316	3-1/2"	14	#2/0	5	20
558250	99317	3-1/2"	6	250MCM	5	5
559	99318	4"	14	#2/0	5	5
559250	99319	4"	6	250MCM	5	5



**Arlington®**

1 Stauffer Industrial Park  
 Scranton, PA 18517  
 800/233.4717 • Fax 570/562.0646  
 www.aifittings.com