

NEW!

Liquid-tight, Concrete-tight MC Cable Fittings

for PVC Jacketed MC Cable or Teck cable • Fits Widest Cable Range



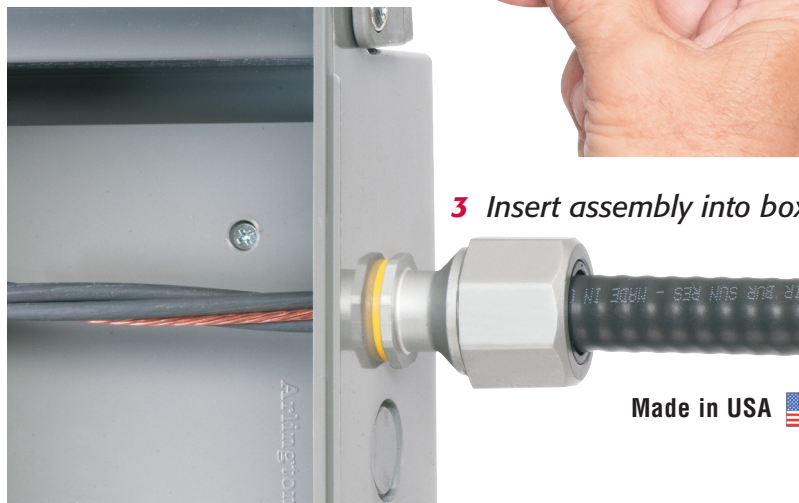
Easy Installation! 1 Cut PVC jacket back 1-1/4"



2 Push jacketed MC cable into fitting



3 Insert assembly into box



Made in USA 

Save time and money with Arlington's liquid-tight, concrete-tight fittings designed especially for PVC jacketed MC cable – and Teck 90 cable.

Perfect for parking decks, these new, larger sizes cover the widest cable range: 14/2 to 6/3.

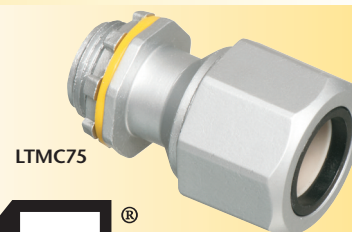
They're compact - and the economical solution to installing PVC jacketed MC or Teck cable.

• cULus Listed



CATALOG NUMBER	UPC/DCI/NAED MFG #01 8997	DESCRIPTION	UNIT/STD PKG
LTMC507	16800	1/2" trade size	25
MC Cable Range:		.550" to .730"	
Teck 90 Range:		.580" to .765"	
MC Cable Overall jacket OD:		.670" to .830"	
Teck 90 Overall jacket OD:		.670" to .855"	

CATALOG NUMBER	UPC/DCI/NAED MFG #01 8997	DESCRIPTION	UNIT/STD PKG
LTMC75	16801	3/4" trade size	25
MC Cable Range:		.725" to .890"	
Teck 90 Range:		.765" to .980"	
MC Cable Overall jacket OD:		.830" to .990"	
Teck 90 Overall jacket OD:		.855" to 1.06"	



Arlington

1 Stauffer Industrial Park
Scranton, PA 18517
800/233.4717
Fax 570/562.0646
www.aifittings.com