

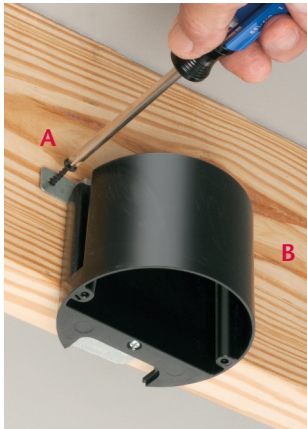
# IN/OUT BOX™ for Ceiling Fixtures

Made in USA 

**NEW!**  
Outlet boxes  
on back

## Adjustable Non-Metallic Box for New Construction

### Easy Installation in New Construction



**1** Install FA426 onto joist with a MINIMUM of four screws; (2) through front flange, (1) in each rear position. A, B, C, D above.



Catalog Number	UPC/DEI/NAED Mfg. #018997	Description	Size/Cu Inches	Unit/Std Pkg
FA426	40040	Adjustable Ceiling Fixture Box	Round 20.5 cu in	25/ctn
FA426GC	40041	Adjustable Ceiling Fixture Box w/ ground clip for Canada	Round 20.5 cu in	25/ctn

Includes (4) installation screws, NM cable connector  
Pre-set for 1/2" wall thickness - Depth adjustment up to 1-1/2"



**2** After installing the box on joist slide plastic insert into box. Pull NM cable through installed NM connector.



Photo A (cutaway) shows box set back in double drywall ceiling



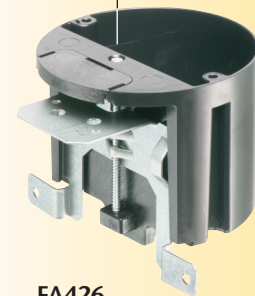
Photo B Box now flush with ceiling

**3** After installation of wall board is complete use the depth adjustment screw to adjust position of FA426 box if necessary (see Photo B). FA426 adjusts up to 1-1/2" for ceiling thickness.

Arlington's IN/OUT BOX for ceiling fixtures adjusts up to 1-1/2" to accommodate varying ceiling thicknesses, like single or double drywall.

- Pre-set for 1/2" ceiling... Depth adjusts up to 1-1/2"
- Always accessible depth adjustment screw allows for depth adjustment of box before or after the ceiling is in place
- Complies with 2014 NEC, 314.20 for set back boxes
- Mounts securely to joist in new construction
- Listed for fixture support up to 50 lbs
- UL/CSA Listed

Depth adjustment screw



FA426 Adjustable Fixture Box

Patent pending



**Arlington**

1 Stauffer Industrial Park  
Scranton, PA 18517

800/233.4717

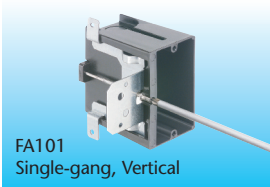
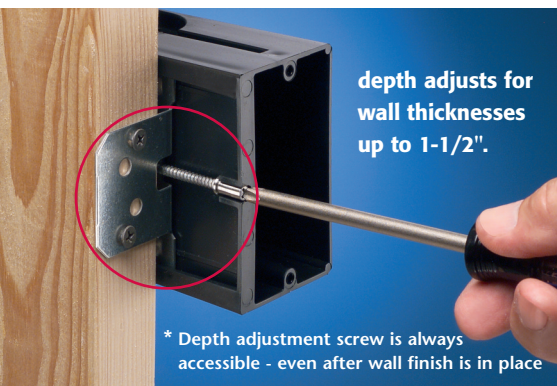
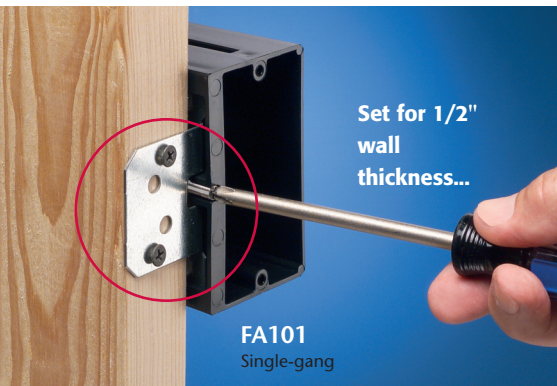
Fax 570/562.0646

www.aifittings.com

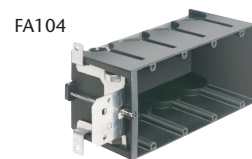
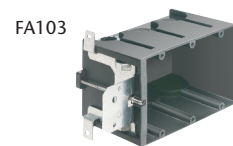
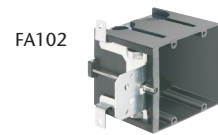
# IN/OUT BOX™ Adjustable OUTLET Boxes

Made in USA 

## Adjustable Non-Metallic Outlet Boxes for New Construction



Catalog Number	UPC/DEI/NAED Mfg. #018997	Description	Number of Gangs / Cubic Inches	Unit/Std Pkg
<b>FA101*</b>	04241	Non-metallic box	Single/Vertical/21.0 cu in	25
<b>FA101H*</b>	11102	for 2x4 studs w/ depth adjustment up to 1-1/2" (pre-set for 1/2" wall thickness)	Single/Horizontal/21.0 cu in	25
<b>FA102*</b>	04242		Two-gang / 43.5 cu in	10
<b>FA103*</b>	04243		Three-gang / 65.0 cu in	10
<b>FA104</b>	04244		Four-gang / 87.0 cu in	10



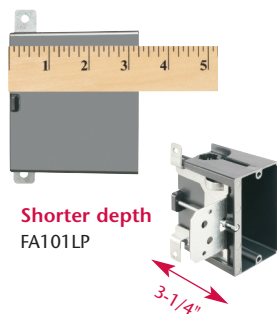
### with Ground Clip for use in Canada

Catalog Number	UPC/DEI/NAED Mfg. #018997	Description	Number of Gangs / Cubic Inches	Unit/Std Pkg
<b>FA101GC*</b>	76881	Non-metallic box	Single/Vertical/21.0 cu in	25
<b>FA101HGC*</b>	11103	w/ depth adjustment up to 1-1/2" (pre-set for 1/2" wall thickness)	Single/Horizontal/21.0 cu in	25
<b>FA102GC*</b>	76883		Two-gang / 43.5 cu in	10
<b>FA103GC*</b>	76884		Three-gang / 65.0 cu in	10
<b>FA104GC</b>	76885		Four-gang / 87.0 cu in	10

Catalog Number	UPC/DEI/NAED Mfg. #018997	Description	Unit/Std Pkg
<b>FA102D</b>	04245	Low Voltage Divider for FA102, FA103, FA104	25



Optional FA102D low voltage separator for use with multiple gang IN/OUT BOX



Catalog Number	UPC/DEI/NAED Mfg. #018997	Description IN/OUT BOX™	Size/ Cu Inches	Unit/Std Pkg
<b>FA101LP</b>	76880	3.25" deep, Non-metallic low profile outlet box	Single-gang 18.3 cu in	25
<b>FA101LPGC</b>	76882	3.25" deep, Non-metallic low profile outlet box, with ground clip for Canada	Single-gang 18.3 cu in	25

w/ depth adjustment up to 1-1/2" (pre-set for 1/2" wall thickness)

Arlington's IN/OUT OUTLET BOXES are adjustable for wall thicknesses up to 1-1/2"; perfect for use when the final thickness is not known; double drywall, change orders, tile, etc.

**New!** ...single-gang **horizontal** box **FA101H** for countertops and horizontal outlets... single-gang, **low profile** **FA101LP**. Made for new work installations with shallower wall cavities, it's shorter than our 'regular' single-gang IN/OUT outlet box – perfect for smaller spaces.

- Complies with 2014 NEC, 314.20 for set back boxes
- Always accessible depth adjustment screw
- Secure installation on wood or steel studs in new construction



1 Stauffer Industrial Park  
Scranton, PA 18517  
**800/233.4717**  
**Fax 570/562.0646**  
**www.aifittings.com**

FA426 1214/15M  
Patent pending