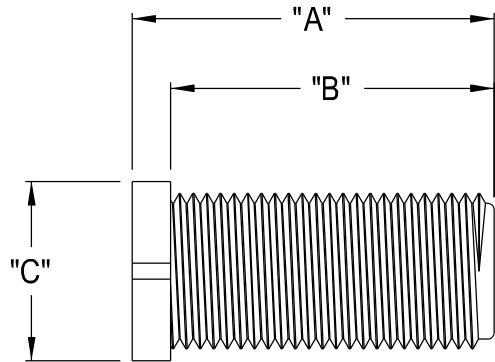
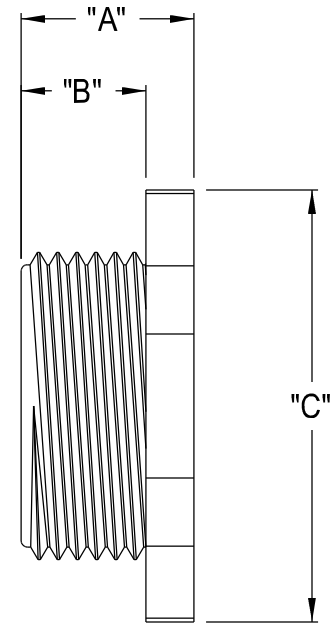
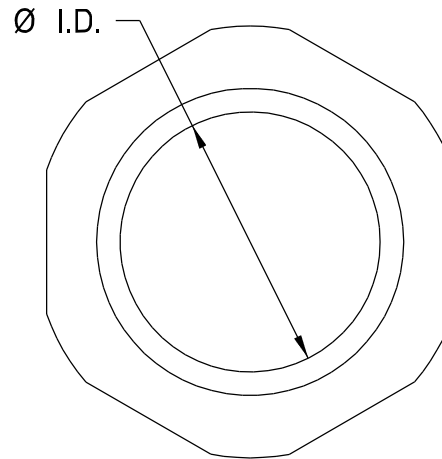
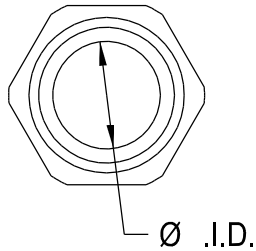


Note:
Material: PVC

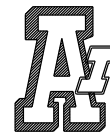


NM501EL



NM501-NM506

NM501EL	1/2"	1.884	1.684	1.020	.560
NM506	2"	.930	.680	3.124	2.020
NM505	1 1/2"	.900	.650	2.581	1.575
NM504	1 1/4"	.900	.650	2.250	1.320
NM503	1"	.900	.575	1.592	.962
NM502	3/4"	.796	.546	1.312	.695
NM501	1/2"	.812	.612	1.057	.559
PART NO.	TRADE SIZE	"A"	"B"	"C"	" \emptyset I.D."



Arlington Industries, Inc.

1 Stauffer Industrial Park
Scranton, Pa 18517

**NON-METALLIC CONDUIT NIPPLES
(PVC) ARTICLE DRAWING**