



Arlington Industries, Inc.

1 Stauffer Ind. Park - Scranton, Pa. 18517

800-233-4717 570-562-0646

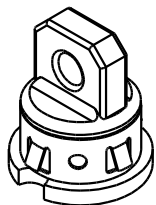
www.aifittings.com - E-MAIL : sales @ aifittings.com



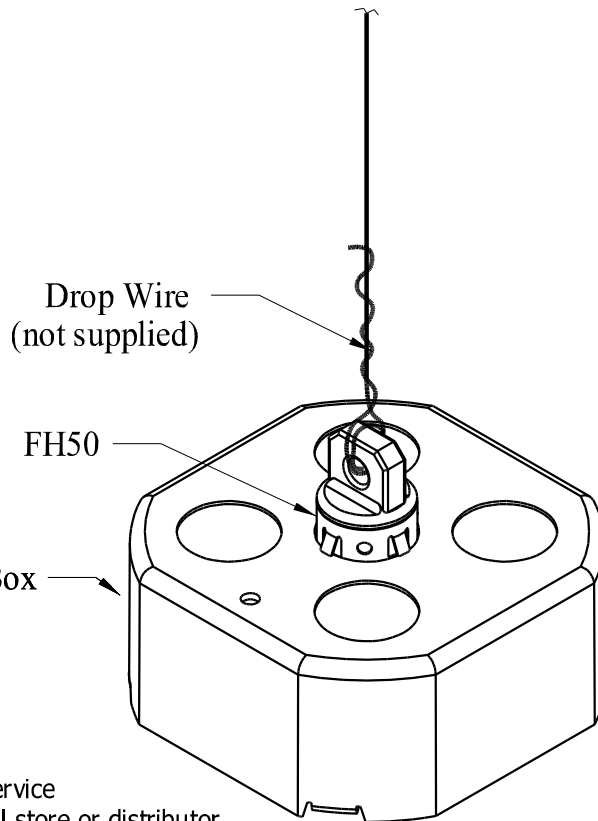
Install fixture per National, State
and Local Electrical Codes.

Installation Instructions for : FH50 - Fixture Hanger

1. Install FH50 in standard 1/2" KO (\emptyset .875 nominal) from the inside of box.
2. FH50 installation requires .080" minimum diameter drop wire of solid or braided construction. (Drop wire not supplied)
3. If using solid drop wire without the use of locking device (Arlington DW50 or FLG3 recommended), it is necessary to wrap wire thru the FH50 center hole twice and wrap the wire back onto itself 6 times.(see diagram)
4. FH50 is rated for 70 lb fixture UL_{us} , 50 lb fixture _cUL



Steel Electrical Box
(not supplied)



If you have any questions or if parts are missing , Please call our Customer Service Department at 1-800-233-4717. Do not call or return this product to your local store or distributor.