

For Joist or Rafters 16" to 24" on center

Steel Fan & Fixture Mounting Box with Adjustable Mounting Bracket for New Construction

Extra duty plated steel fan/fixture box with fully adjustable mounting bracket. Ceiling fan/fixture pan boxes mount directly to a joist for a secure installation. Steel box.

| CATALOG NUMBER | UPC/DCI/NAED MFG #018997 | DESCRIPTION / CU. IN. | UNIT PKG | STD PKG | DIM A | DIM B |
|----------------|--------------------------|--|----------|---------|-------|-------|
| FBR5415 | 72250 | For up to 1-1/4" ceiling thickness 15.6 cu. in. | 1 | 10 | 4.000 | 2.658 |



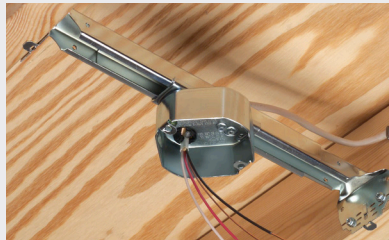
PATENTED.

Note: Install fan or fixture (not included) in accordance with manufacturer's instructions and all local applicable electrical codes, using the parked screws provided. For fan/fixture box dimensions, refer to FBS415 on page R-5. Refer to chart on page R-25 for load ratings and number of single conductors.

FEATURES AND BENEFITS

- Works on ceilings up to 1-1/4" thick, fully adjustable!
- For ceiling material greater than 5/8", convenient indicator marks allow you to bend the bracket at the scoreline matching your ceiling depth for a flush ceiling installation.
- Fan/fixture installation screws are parked, ready for easy fan/fixture bracket installation!
- UL rated: 70 lb fan/90 lb fixture at 24" o.c. and 70 lb fan/150 lb fixture at 16" o.c.; CSA rated: 50 lb fan/fixture
- No loose parts to misplace
- Extra duty plated steel construction eliminates fan wobble
- Versatile 16" to 24" on center positioning
- Bracket preset for 1/2" ceiling thicknesses
- Locator tabs included for installation ease

Mounts easily and securely between joists, adjusts from 16" to 24" o.c.



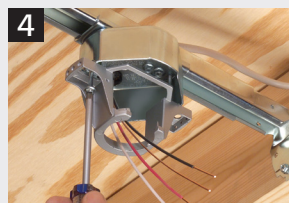
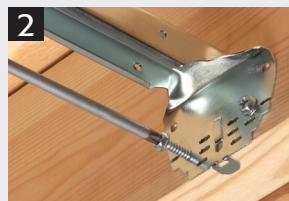
Bend bracket along the score lines for 3/4", 1", or 1-1/4" ceiling depths!

FAN/FIXTURE BOX INCLUDES

Box/bracket, screws to adjust box position, installed NM cable connector & mud cover, four installation screws parked in place (ready for installer), and two screws for fan/fixture bracket installation (screwed in place until removed by installer).



INSTALLATION INSTRUCTIONS for 1/2" Ceilings



- 1) Nail "tooth" to joist to temporarily hold bracket in place.
- 2) Remove parked screws provided on each side of bracket and use them to attach bracket to joists.
- 3) Use provided box screw to adjust box position from 16" to 24" on center between joists.
- 4) Use provided parked fan/fixture installation screws to install fan/fixture mounting bracket. (Installation of drywall not shown.)