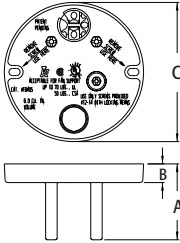


Fan & Fixture Mounting Boxes



EACH FAN/FIXTURE BOX INCLUDES...

A ready-to-tighten center screw, installed NM cable connector, mud cover, second KO, and two screws for fan/fixture bracket installation (screwed in place until removed by installer).

Ceiling fan/fixture pan boxes.

FEATURES AND BENEFITS

- No loose parts to misplace—totally self-contained!
- Fan/fixture installation screws are parked...ready for easy fan/fixture bracket installation!
- Works well on double joists or wood I-beams
- Combination hex/Phillips head screws for easy installation with power screwdrivers
- UL rated: 70 lb fan, 200 lb fixture; CSA rated: 50 lb fan/fixture
- 2-Hour Fire Rating

CATALOG NUMBER	UPC/DCI/NAED MFG #018997	DESCRIPTION / CU. IN.	UNIT PKG	STD PKG	DIM A	DIM B	DIM C
FB405	72185	For 1/2" or 5/8" drywall 6.0 cu. in.	25	25	2.315	.570	4.250
FB4050*	28101	For 1/2" or 5/8" drywall 6.0 cu. in.	100	100	2.315	.570	4.250
FB407	72177	For 5/8" drywall 8.0 cu. in.	25	25	2.405	.660	4.250
FB4070	28102	For 5/8" drywall 8.0 cu. in.	100	100	2.405	.660	4.250

Note: Install fan or fixture (not included) in accordance with manufacturer's instructions and all local applicable electrical codes, using the parked screws provided.

*Bulk packing for lower cost.

Refer to chart on page R-24 for load ratings and number of single conductors.

PATENTED.

