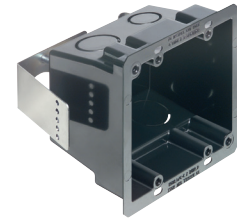


Non-Metallic and Plated Steel 4x4 Boxes

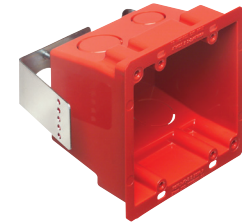
For retrofit construction. Screw hole patterns for 4x4 and 2-gang devices. Available in non-metallic (black and red plastic) and plated steel versions.

FEATURES AND BENEFITS

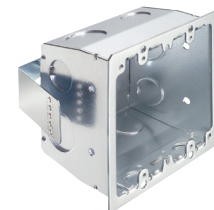
- Non-metallic and steel versions in red are ideal for installations of fire alarms or signaling devices
- 1/2" and 3/4" knockouts
- Spring clip holds box securely against wall when screws are tightened
- Weight rating: 6 lbs for walls; 10 lbs for ceilings
- Non-metallic boxes include (2) NM94 cable connectors
- †2-hour fire rating



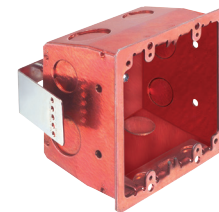
FSR404BL



FSR404RD



FSR404S



FSR404SRD

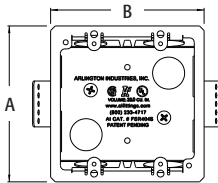


FSR404SD

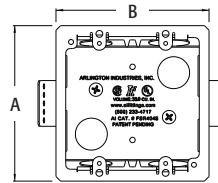
CATALOG NUMBER	UPC/DCI/NAED MFG #018997	DESCRIPTION/ ATTACHMENT	UNIT PKG	STD PKG	DIM A	DIM B	DIM C
FSR404BL†	00596	Plastic 4x4 box, Black	25	25	4.250	4.185	2.815
FSR404RD†	00598	Plastic 4x4 box, Red	25	25	4.250	4.185	2.815
FSR404S*	00597	Steel 4x4 box, Plated	25	25	4.250	4.185	2.815
FSR404SRD*	00599	Steel 4x4 box, Red	25	25	4.250	4.185	2.815
FSR404SD*	00600	Non-metallic 4x4 box divider	25	25	3.581	0.141	2.750



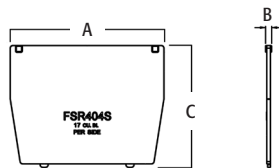
E170558 E170558



FSR404BL, FSR404RD
27.5 cu. in.



FSR404S, FSR404SRD
33.0 cu. in.

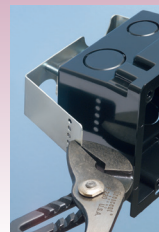


FSR404S
17 cu. in.
PER SIDE

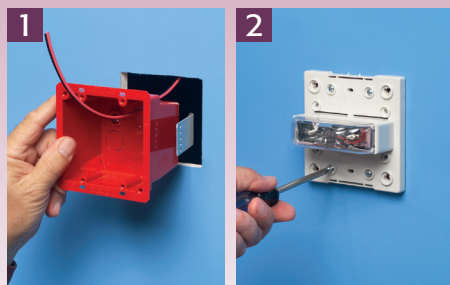


*cULus listed.
† 2-Hour Fire Rating
PATENTED.

For wall thicknesses up to 1-1/4"—field modify bracket for thicknesses greater than 1-1/4".



Typical Installation of Low Voltage Fire Alarm Box using Red 4x4 Box

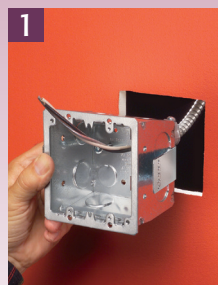


1 Determine position of device. Cut hole. Pull wire(s) through appropriate knockout (connector). Install box in opening. FSR404RD shown.

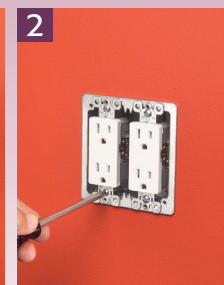


2 Install fire alarm (or other device) through the screw holes in the box.

Typical Installation of Device using Steel or Black Plastic 4x4 Box



1 Determine position of device. Cut hole. Pull wire(s) through appropriate knockout (connector). Install box in opening. FSR404S shown.



2 Install devices through the screw holes in the box.

Scan For Video

