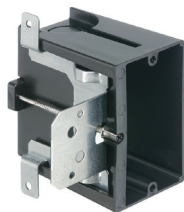


## Non-Metallic Outlet Box for New Construction

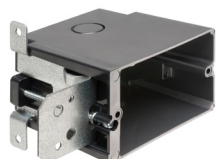
Adjustable for wall thicknesses from 1/4" to 1-1/2". It's perfect for use when the final wall thickness is unknown. Mounts directly to a wood or steel stud.

### FEATURES AND BENEFITS

- Fast and easy to install
- No more set back boxes—IN/OUT BOX depth adjusts before OR after the wall finish is done
- Depth adjustment screw is accessible even after the wall finish is in place
- Secure installation—Mounts to wood or steel studs in new construction
- Complies with 2014 NEC, 314.20 for set back boxes
- FA102D low voltage separator for use with multiple gang versions
- FA101LP is low profile, designed for new work installations with shallower wall cavities
- \*2-hour fire rating



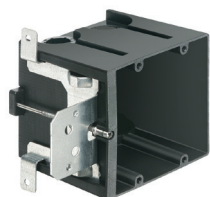
FA101



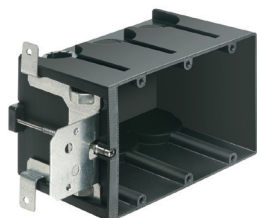
FA101H



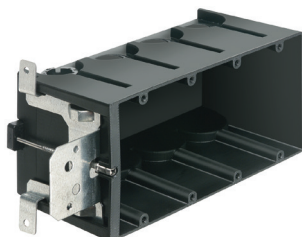
FA101LP



FA102



FA103



FA104



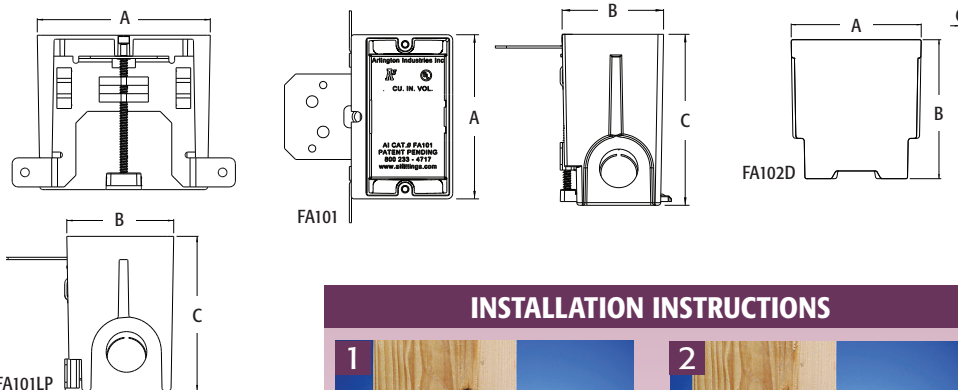
FA102D

CATALOG NUMBER	UPC/DCI/NAED MFG #018997	DESCRIPTION/ CU. IN.	UNIT PKG	STD PKG	DIM A	DIM B	DIM C
FA101*	04241	Single-gang/Vertical/21.0	25	25	3.720	2.299	3.875
FA101H*	11102	Single-gang/Horizontal/21.0	25	25	3.720	2.299	3.875
FA101LP	76880	Single-gang/Vetical/18.3	25	25	3.720	2.299	3.320
FA102*	04242	2-Gang/43.5	10	10	3.720	4.111	3.875
FA102D	04245	Voltage divider	25	25	3.531	3.775	.105
FA103*	04243	3-Gang/65.0	10	10	3.720	5.923	3.875
FA104	04244	4-Gang/87.0	10	10	3.720	7.735	3.875

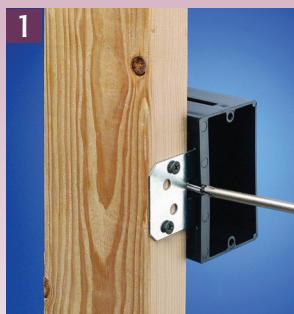
Add suffix "GC" to Catalog # when ordering in Canada to include grounding clip, for example FA101GC.

\*2-Hour Fire Rating

**PATENTED.**



### INSTALLATION INSTRUCTIONS



1 Attach IN/OUT BOX to wood or steel stud with captive installation screws. Feed the wires through the knockout.



2 If the box is too far forward or back, simply adjust the depth by turning the screw.

*Mounts  
DIRECTLY  
to wood or  
steel stud*