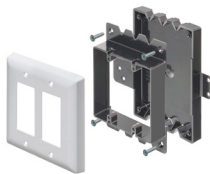
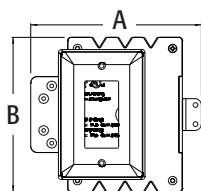


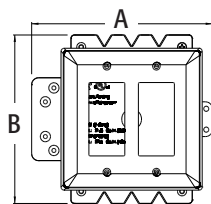
FSB1



FSB2



FSB1



FSB2

## Large Volume Furred Wall Box™ with Cover

**NEW!**

Versatile mounting options. Our high strength FSB series outlet boxes are designed for use with existing 1x2 drywall furring strips – but can also be mounted on a concrete block wall between furring strips so installers can place the box/outlet where needed.

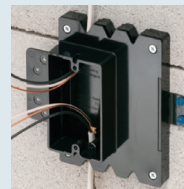
### INSTALLATION INSTRUCTIONS



1a. Install box on existing drywall furring strip for approximate placement



1b. Install box on block wall for exact placement



2. Install cable and pigtail wiring as applicable.



3. Install device. Install finish trim plate.

CATALOG NUMBER	UPC/DCI/NAED MFG #018997	DESCRIPTION Furred Wall Box Kit	UNIT PKG	STD PKG	Volume (In3)	DIM A	DIM B
FSB1	99321	Single gang box & cover	1/10	1/10	21.3	6.614	6.062
FSB1C	99323	Single gang cover	1/10	1/10	---	6.614	6.062
FSB2	99322	Two-gang box & cover	1/10	1/10	17	6.614	6.062
FSB2C	99324	Two-gang cover	1/10	1/10	---	6.614	6.062



PATENTED.

MADE IN USA.