

Gangable Non-Metallic Boxes

Build the box you need with these nail and screw on gangable Non-metallic boxes for new & retrofit work.

CATALOG NUMBER	UPC/DCI/NAED MFG #018997	DESCRIPTION	UNIT PKG	STD PKG	DIM A	DIM B	DIM C
FE102C	01582	Each adds one gang Center section for FEN102 and FES102	10	10	3.688	3.500	2.686
FE102D	01586	Optional Voltage Divider	25	25	3.476	3.335	.125
FE102E	01585	2-Gang (includes 2 brackets) Mounts with brackets for new construction	10	10	4.250	3.500	2.236
FEN102	01580	2-Gang (includes 1 bracket) Nail on for new construction	1	10	6.002	3.500	2.044
FER102	01583	2-Gang w/ mounting wing screws for old work	1	10	4.258	3.500	2.097
FER102C	01584	Each adds one gang Center section for old work use with FER102	10	10	3.615	3.500	1.812
FES102	01581	2-Gang (includes 1 bracket) Screw on for retrofit or new construction	1	10	3.688	3.500	2.044
FE101	06930	Single-gang plate Converts any box to single-gang	10	10	3.688	3.500	2.754



PATENTED.

R20657

MADE IN USA.

FEATURES AND BENEFITS

- Use a screwdriver to disassemble or separate the parts. Add or remove the center section(s), then snap the pieces back together, fast and easy!
- Great looking installation of multiple gang boxes
- Nail on style for new construction or screw on style for new or old construction
- In old work mounting wings hold the box securely against the wall

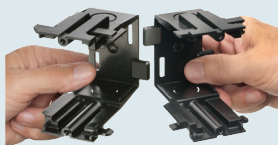
UL Listed
up to **10 GANGS**
(two end sections
plus up to 8 center
sections)

Scan For Video



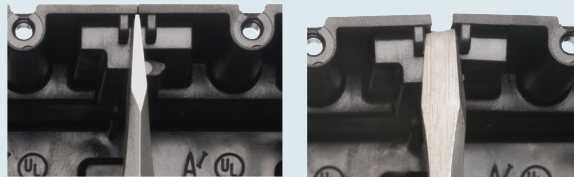
INSTALLATION INSTRUCTIONS

Assemble

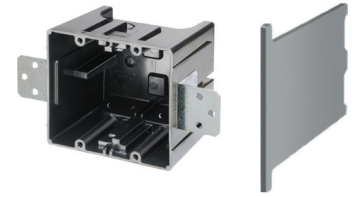


Each section adds one gang to the box. Snap the pieces together to make your desired box. From three to ten gangs.

Disassemble

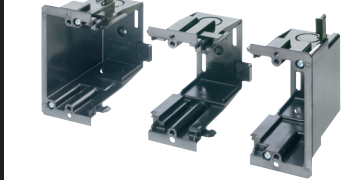


To disassemble or separate the parts insert a screwdriver between the tabs at the top of the box (on each side) as shown above, and twist.



FE102E

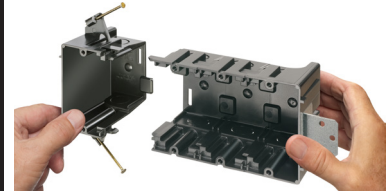
FE102D



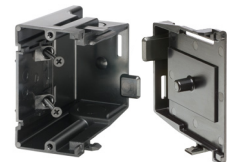
FER102 screw on with one **FER102C** center



FES102 Screw on with one **FE102C** center



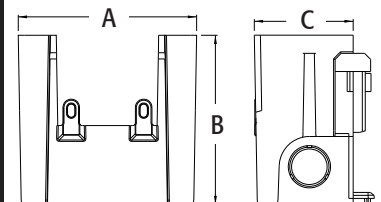
FEN102 nail on with two **FE102C** centers



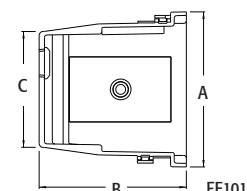
FES102 screw on with **FE101** plate
Snap together to create single gang box.



FEN102 Nail on with
five **FE102C** centers



FES102



FE101