

Low Profile 5x8" TV Box With Steel Box for MC, AC, and Flexible Metal Conduit (FMC)

Low Profile TV BOX™ with steel back box for use with MC, AC, and flexible metal conduit. For a flush to the wall installation as shallow as 3/4". Fits also on 2x2, 2x3 and 2x4 or larger studs. Comes with 38RAST Snap2It® connector to complete installation.

CATALOG NUMBER	UPC/DCI/NAED MFG #018997	DESCRIPTION	UNIT PKG	STD PKG	DIM A	DIM B	DIM C	DIM D
TVL508S	15240	5" x 8" Power and/or low voltage box	1	4	7.555	10.215	.750	1.250



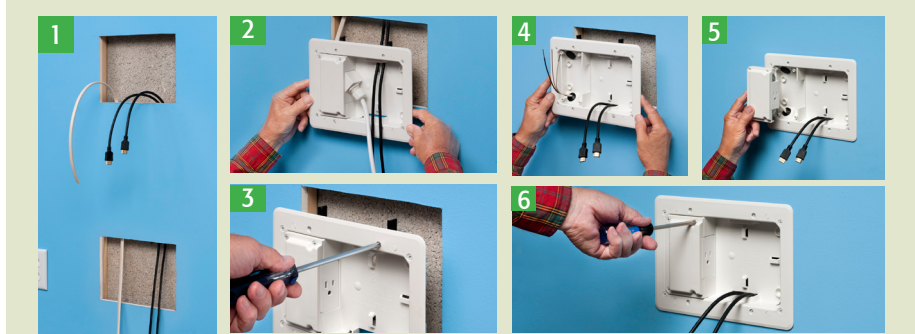
FEATURES AND BENEFITS

- Fast, easy, convenient, saves time and money!
- Secure installation. Good looks and great finish.
- Mounting wings hold boxes securely against the wall when screws are tightened
- All wires stay hidden behind the wall, no messy wires running down the wall from TV to components
- Paintable trim plate

INCLUDES

(1)TVL508S box with pre-installed receptacle bracket with grounding screw, (1)Trim Plate, (1) Receptacle Cover, (1) NM Snap In Blank, (1) Decorator Style Duplex Receptacle, (1) Cable Connector, (8) #8-32 x 5/8" Long Screws, (2) #6-32 x 5/8" Long Screws, (2)#6 x 1-5/8" Long Wood Screw

INSTALLATION INSTRUCTIONS



LOWER BOX

- 1) After locating position of TV and installing mounting bracket, cut holes for upper and lower boxes in a clear space within the same stud bay.
- 2) Position lower box so that supplied cord reaches existing receptacle (or power conditioner). Feed NM cable connector from lower box. behind the wall, to upper box opening. Low voltage cable and speaker wire may also be pulled at this time.
- 3) Install box/power cord assembly by tightening four wing screws.

UPPER BOX

- 4) Install trim plate. Pull NM cable through connector. Install box in hole by tightening wing screws. (see image 3)
- 5) Attach electrical receptacle to receptacle mounting bracket.
- 6) Attach receptacle mounting bracket to box.

