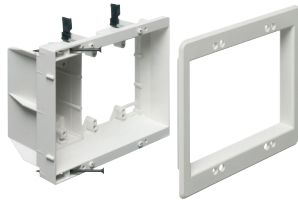
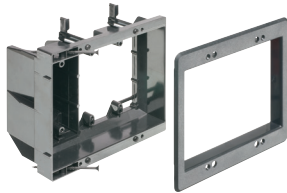


Multiple Gang Recessed TV BOX™ for Power and Low Voltage



TVBU507



TVBU507BL

Includes...

Recessed combo box; (1) trim plate; (1) decorator style cover plate; and installation screws.

TVBR505K Kit

Includes: Recessed combo box; (1) tamper-resistant duplex receptacle; (1) CEDH1 & (1) CED130; and (1) wall plate.

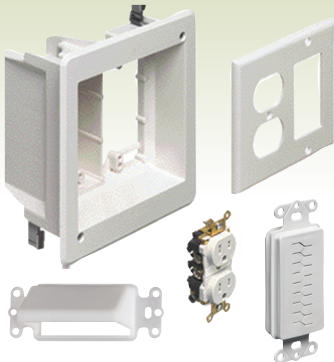
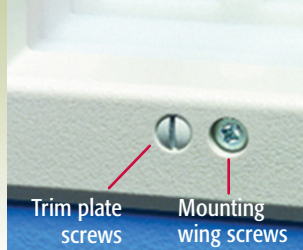


Photo B - Screws



For new or existing construction (TVBR505K for old work only). Non-metallic, recessed combo boxes for power and low voltage for class 2 wiring of satellite or cable TV, speakers, etc.

FEATURES AND BENEFITS

- Recessed combo box allows you to mount LCD/plasma TVs and other system components flush against the wall
- For new work... Use supplied screws to install on stud. For convenience, box positioning tabs are set for 1/2" or 5/8" drywall
- Trim plate is textured/paintable and covers edges of cut wall surface
- Mounting wings hold bracket securely against wall when screws are tightened
- For walls up to 1-1/2" thick
- Use with Arlington's SCOOP™ series entrance hoods and plates (see pages O-7 to O-9)

| CATALOG NUMBER | UPC/DCI/NAED MFG #018997 | DESCRIPTION | UNIT PKG | STD PKG | DIM A | DIM B | DIM C |
|----------------|--------------------------|---------------------------------------|----------|---------|-------|-------|-------|
| TVBU505* | 09680 | 2-Gang, White, (1) Power/ (1) LV | 1 | 4 | 6.942 | 6.254 | 3.750 |
| TVBU505BL* | 09681 | 2-Gang, Black, (1) Power/ (1) LV | 1 | 4 | 6.942 | 6.254 | 3.750 |
| TVBU505K*† | 09682 | Kit, 2-Gang, White, (1) Power/ (1) LV | 1 | 4 | 6.942 | 6.254 | 3.750 |
| TVBR505K* | 09670 | Kit, 2-Gang, White, (1) Power/ (1) LV | 1 | 4 | 6.942 | 6.254 | 3.750 |
| TVBU507 | 09661 | 3-Gang, White, (1) Power/ (2) LV | 1 | 4 | 6.818 | 7.930 | 3.875 |
| TVBU507BL | 09662 | 3-Gang, Black, (1) Power/ (2) LV | 1 | 4 | 6.818 | 7.930 | 3.875 |

Add suffix "GC" to Catalog # when ordering in Canada to include grounding clip, for example TVBU505GC.

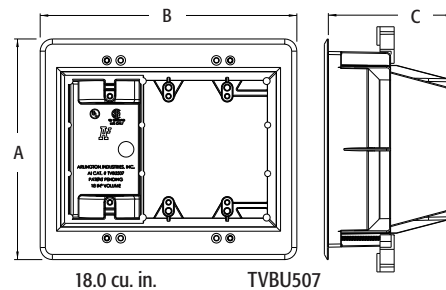
*Optional box covers available on page Q-3.

† Includes brush-style cable entry device.

PATENTED.



Scan For Video



INSTALLATION INSTRUCTIONS

NEW WORK (TVBU505 SHOWN)



Attach box to stud. Use tabs for proper positioning of box depth. See [step 2](#).



Positioning tabs are set for 1/2" or 5/8" drywall.

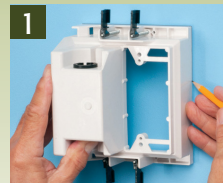


Attach paintable trim plate with screws provided. See [Photo B](#).



Tighten mounting wing screws to pull the box securely against the wall board. See [Photo B](#).

RETROFIT WORK (TVBU505 SHOWN)



Using box, without trim plate as a template, mark location. Cut hole.



Attach trim plate to box. See [Photo B](#). Pull wire/cables. Install box assembly in opening.



Tighten mounting wing screws to pull the box securely against the wall board. See [Photo B](#).



TVBU505 with power in one side; low voltage in the other. CED13 (page O-6) used to secure wall plate to box.