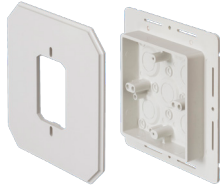
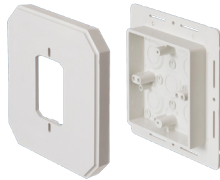
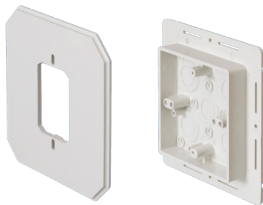
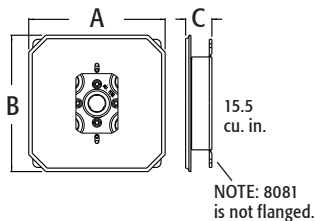

**8081**

**8081F**

**8082F (for 1/2" or less)**

**8081FC**
**8081FB**


## Siding Box Kits for Fixtures and Devices

For smooth vertical mounting of fixtures and receptacles on sided structures. Paintable. UV rated plastic for long outdoor life.

CATALOG NUMBER	UPC/DCI/NAED MFG #018997	SIDING TYPE	STYLE	UNIT PKG	STD PKG	DIM A	DIM B	DIM C
8081*	80812	All Types	w/o Flange	25	25	6.650	6.650	1.280
8081F*†	80814	All Types	w/ Flange	25	25	6.650	6.650	1.280
8082F*	32240	1/2" or Less	w/ Flange	25	25	6.650	6.650	1.249
8081FC	10939	All Types	Cover Only	25	25	6.650	6.650	.750
8081FB*†	10941	All Types	Box Only	25	25	6.250	6.250	1.000



**MADE IN USA.**

\*Add suffix "GC" to Catalog # when ordering in Canada to include grounding clip, for example 8081FCGC. † For Larger fixture mount see 8081FDBLC on pg L-3.

### FEATURES AND BENEFITS

- UL Listed electrical box
- Textured, paintable surface
- NM cable connector included
- Works on all siding types, Before or After the siding is up!
- Flanges may be removed for retrofit work

For Installation Instructions 'AFTER Siding is Up' see below. For Installation Instructions 'BEFORE Siding is Up' see page L-2.

### INSTALLATION INSTRUCTIONS

#### AFTER Siding is Up...

Without Flange (8081 & 8081DBL)

NOTE: 8081F, 8081FDBL, 8082F, 8091F, and 8091FDBL may also be installed when siding is already up. Score and break off flanges before step one (below).



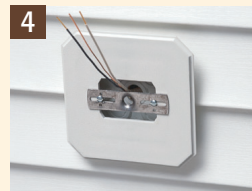
Disconnect electrical power. Place box section in desired location and pencil outline onto siding.



Cut along pencil line with razor knife and remove vinyl siding.



Mount box section to substrate. Caulk as required.



Place siding block over box section (8081 shown).



Connect wires and install fixture per manufacturer's instructions.

