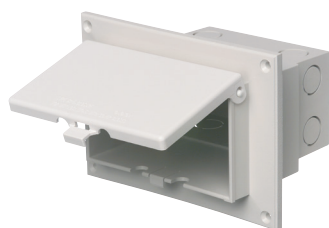
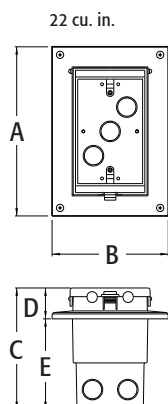


DBVR1C



DBHR1W



Scan For Video



IN BOX® FOR RETROFIT, FLAT SURFACES INCLUDES

Box with extra duty weatherproof in use; installed bug plugs; (1) standard duplex and (1) standard GFCI face plate; (1) set installation screws; (1) NM cable connector; and (1) roll of caulk.

Low Profile In Box® for Flat Surface Retrofit Construction

Extra duty one piece 22.0 cubic inch recessed electrical box with extra duty weatherproof in use cover for flat surfaces in existing construction. Non-metallic cover and base. Accepts most single-gang wiring devices and uses standard indoor wall plates or a GFCI cover plate. Box and white cover are textured/ paintable. UV rated plastic for long outdoor life. Extra duty replacement covers available on K-17.

CATALOG NUMBER	UPC/DCI/NAED MFG #018997	ORIENTATION/ COVER COLOR	UNIT PKG	STD PKG	DIM A	DIM B	DIM C	DIM D	DIM E
DBVR1C	14313	Vertical/Clear	1	4	7.186	4.934	5.160	1.313	3.847
DBVR1W	14314	Vertical/White	1	4	7.186	4.934	5.160	1.313	3.847
DBHR1C	77604	Horizontal/Clear	1	4	4.934	7.186	5.160	1.313	3.847
DBHR1W	77606	Horizontal/White	1	4	4.934	7.186	5.160	1.313	3.847



PATENTED.
E170558 LR49636
MADE IN USA.

ADDITIONAL PATENTS
PENDING.

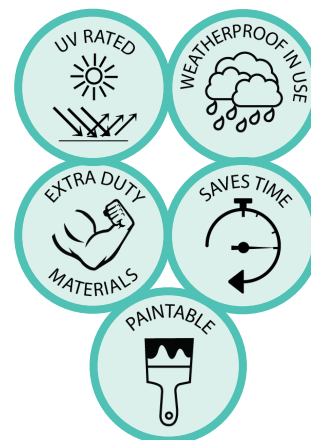
Note: Meets NEC section 406.9 (B) for the protection of exterior outlets where an extra duty weatherproof in use cover is required for 15 or 20 AMP receptacles installed outdoors. Add suffix "GC" to Catalog # when ordering in Canada, for example DBVR1CGC. 2-Gang style available on page K-8.

FEATURES AND BENEFITS

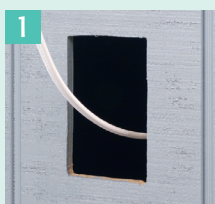
- In Box®'s one piece assembly replaces the installation of an electrical box and bubble cover assembly
- Use the retrofit In Box® on plywood, T-111, and other flat surfaces
- Install option: Cover is removable for easier device installation
- Installs in the wall, so less of it shows outside
- No gaskets required
- Weatherproof in use
- Extra duty



Bug Plugs ship installed in all In BOX® styles to seal unused cord hole openings.



INSTALLATION INSTRUCTIONS



1 Cut a 3-1/4" x 5-1/2" hole in substrate. Pull wiring.



2 Apply the supplied caulk around back edges of flange. Install NM cable connector and wire, then press onto surface.



3 Attach In Box® with stainless steel screws (provided).



4 Install wiring device per manufacturer's instructions, Local and National Electrical Codes.



Accepts most single gang wiring devices, and uses a standard indoor wall plate. DBVR1C shown.



DBVR1W shown. In Box® Saves Time. Looks Great!