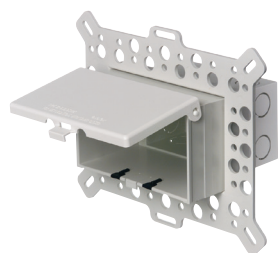
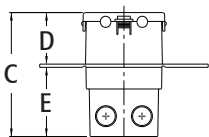
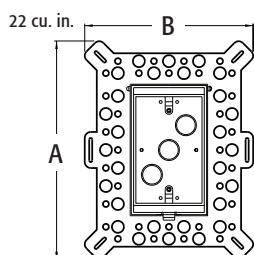


DBVM1C



DBHM1W



Scan For Video



### IN BOX® FOR NEW STUCCO, TEXTURED SURFACES, AND RIGID SIDING INCLUDES

Box with extra duty weatherproof in use cover; installed bug plugs; (1) standard duplex and (1) standard GFCI face plate; (1) NM cable connector; block bushing with washer; and an in place, disposable mud cover.

## Low Profile In Box® for New Construction Stucco, Textured Surfaces, and Rigid Siding

One piece, 22.0 cubic inch recessed electrical box with extra duty weatherproof in use cover for stucco over masonry or wood construction. Also for cementitious/fiber rigid lap siding. Non-metallic cover and base. Accepts most single-gang wiring devices and uses standard indoor wall plates or a GFCI cover plate. Box and white cover are textured/paintable. UV rated plastic for long outdoor life. Extra duty replacement covers available on K-17.

CATALOG NUMBER	UPC/DCI/NAED MFG #018997	ORIENTATION/ COVER COLOR	UNIT PKG	STD PKG	DIM A	DIM B	DIM C	DIM D	DIM E
DBVM1C	14315	Vertical/Clear	1	4	9.058	7.012	5.160	1.805	3.222
DBVM1BR	09026	Vertical/Brown	1	4	9.058	7.012	5.160	1.805	3.222
DBVM1W	14316	Vertical/White	1	4	9.058	7.012	5.160	1.805	3.222
DBHM1C	77608	Horizontal/Clear	1	4	7.012	9.058	5.160	1.800	3.222
DBHM1W	77610	Horizontal/White	1	4	7.012	9.058	5.160	1.800	3.222



E170558 LR49636

PATENTED.

MADE IN USA.

ADDITIONAL PATENTS PENDING.

**Note: Meets NEC section 406.9 (B) for the protection of exterior outlets where an extra duty weatherproof in use cover is required for 15 or 20 AMP receptacles installed outdoors.** Add suffix "GC" to Catalog # when ordering in Canada, for example DBVM1CGC. 2-Gang style available on page K-8.

### FEATURES AND BENEFITS

- One piece assembly replaces the installation of an electrical box and bubble cover assembly
- Installs in the wall, so less of it shows outside
- Holes in flange allow stucco to bond firmly
- Install option: Cover is removable for easier device installation
- Weatherproof in use
- Extra duty



Bug Plugs ship installed in all In BOX® styles to seal unused cord hole openings.



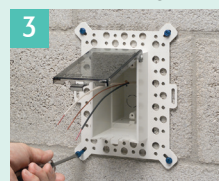
Completed installation with weatherproof in use cover. DBVM1C shown.

### INSTALLATION INSTRUCTIONS for new masonry construction

Note: Additional Installation Methods shown on page K-4.



Make a 3-1/4" x 5-1/2" hole in block. Pull wiring through non-metallic block bushing and opening in block. Block bushing mounts to interior side of block.



Install NM cable connector and wire. Attach recessed In Box® to block. Holes in flange allow stucco to bond firmly.



Install wiring device per manufacturer's instructions, Local, and National Electrical Codes. Accepts most devices and a standard indoor wall plate.

### CUTAWAY

Showing In Box® and non-metallic block bushing mounted in concrete block

