

Low Profile IN BOX® for New Vinyl Siding Construction

Extra duty one piece 22.0 cubic inch recessed electrical box with extra duty weatherproof in use cover for new siding applications. Non-metallic cover and base. Accepts most single-gang wiring devices and uses standard indoor wall plates or a GFCI cover plate. Box and white cover are textured/paintable. UV rated plastic for long outdoor life. Extra duty replacement covers available on K-17.

CATALOG NUMBER	UPC/DCI/NAED MFG #018997	ORIENTATION/COVER COLOR	SIDING TYPE	UNIT PKG	STD PKG	DIM A	DIM B	DIM C	DIM D	DIM E
DBVS1C	14317	Vertical/Clear	All Types	1	4	9.058	7.012	5.160	2.148	2.879
DBVS1W	14318	Vertical/White	All Types	1	4	9.058	7.012	5.160	2.148	2.879
DBHS1C	77600	Horizontal/Clear	All Types	1	4	7.012	9.058	5.160	2.148	2.879
DBHS1W	77602	Horizontal/White	All Types	1	4	7.012	9.058	5.160	2.148	2.879



PATENTED.
MADE IN USA.

Note: Meets 2021 NEC section 406.9 (B) for the protection of exterior outlets where an extra duty weatherproof in use cover is required for 15 or 20 AMP receptacles installed outdoors. Add suffix "GC" to Catalog # when ordering in Canada, for example DBVS1CGC. 2-Gang, style available on page K-8.

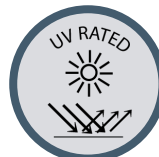
ADDITIONAL PATENTS PENDING.

FEATURES AND BENEFITS

- Outer flange covers cut ends of siding
- Installs in the wall, so less of it shows outside
- IN BOX's one piece assembly replaces the installation of an electrical box, siding block, and bubble cover assembly
- Install option: Cover is removable for easier device installation
- No gaskets required
- Weatherproof in use
- Extra duty



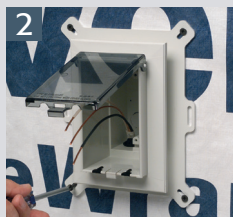
Bug Plugs ship installed in all IN BOX styles to seal unused cord hole openings.



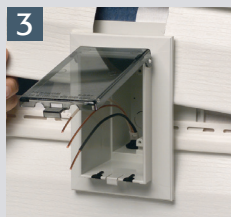
INSTALLATION INSTRUCTIONS



1 Cut a 3-1/4" x 5-1/2" hole in substrate. Pull wiring.



2 Install NM cable connector and wire, attach IN BOX to substrate.



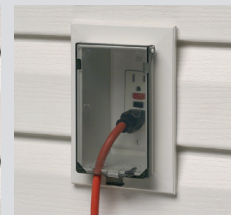
3 Install siding, inserting the cut ends of the siding under the outer flange of the IN BOX.



4 Install wiring device per manufacturer's instructions, Local and National Electrical Codes.



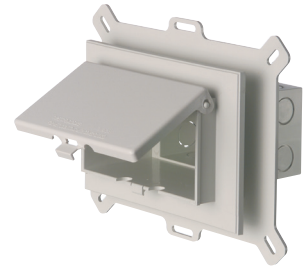
Accepts most single gang wiring devices and uses a standard indoor wall plate.



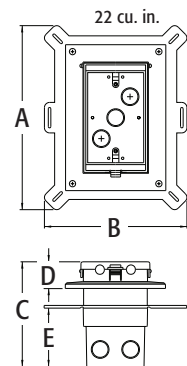
Completed installation with weatherproof in use cover. DBVS1C shown.



DBVS1C



DBHS1W



Scan For Video



IN BOX FOR NEW SIDING INCLUDES

Box with extra duty weatherproof in use cover, installed bug plugs, (1) standard duplex, (1) standard GFCI face plate, installation screws, and (1) NM cable connector.