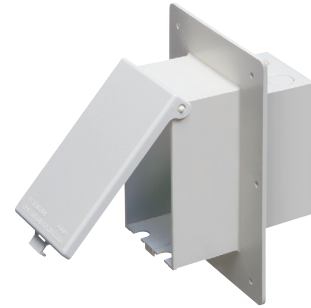


Low Profile IN BOX® for 1-1/2" Wall Systems

Recessed electrical box with weatherproof-in-use extra-duty cover for 1-1/2" wall systems, including foam. Non-metallic cover and base. Accepts most single gang wiring devices and uses standard indoor wall plates or a GFCI cover plate. Box and white cover are textured/ paintable. UV rated plastic for long outdoor life.

FEATURES AND BENEFITS

- IN BOX's one-piece assembly replaces the installation of an electrical box and bubble cover assembly
- Fewer parts to handle—save on materials and labor
- Installs in the wall, so less of it shows outside
- Features a fixed, built-in flange, large enough to eliminate the need for a separate flashing
- Install option: Cover is removable for easier device installation
- No gaskets required



DBVME1W

CATALOG NUMBER	UPC/DCI/NAED MFG #018997	ORIENTATION/COVER COLOR	UNIT PKG	STD PKG	DIM A	DIM B	DIM C	DIM D	DIM E
DBVME1C	77645	Vertical/Clear	1	4	8.000	5.750	5.160	2.461	2.567
DBVME1W	77646	Vertical/White	1	4	8.000	5.750	5.160	2.461	2.567

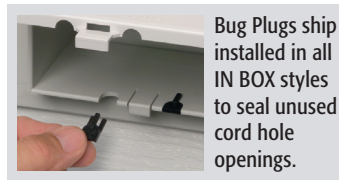
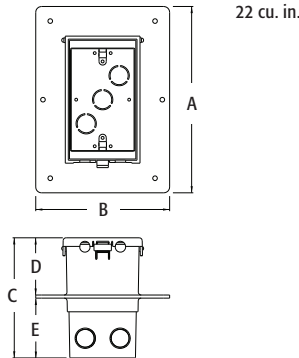


Note: Meets 2015 CEC (Rule 26-702), NEMA 3R, 2017 NEC 406.9 (b); Where a weatherproof-in-use cover is required for 15 or 20 AMP receptacles installed outdoors. Add suffix "GC" to Catalog # when ordering in Canada, for example DBVME1CGC.

Replacement covers available on page K-17.

PATENTED. ADDITIONAL PATENTS PENDING.

WEATHERPROOF-IN-USE
EXTRA-DUTY



Bug Plugs ship installed in all IN BOX styles to seal unused cord hole openings.

IN BOX for 1-1/2" wall systems includes...

Box with weatherproof-in-use extra-duty cover, installed bug plugs, (1) standard duplex and (1) standard GFCI face plate, (1) NM cable connector, and disposable mud cover.

INSTALLATION SHOTS



Saves Time—Looks Great!

Cover ships with disposable mud cover

Low profile IN BOX for a neat, clean look

