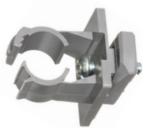


NM3100



NM3105



NM3110



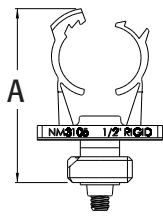
NM3115



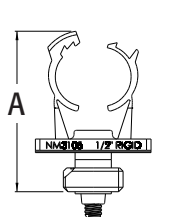
NM3120



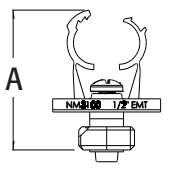
NM3125



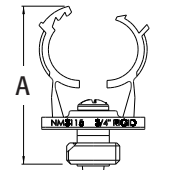
NM3100



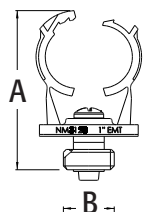
NM3105



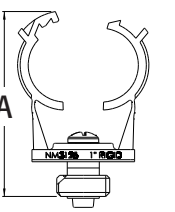
NM3110



NM3115



NM3120



NM3125

## Extra Duty, QuickLatch™ Non-Metallic Pipe Hangers with Installed Strut Clip

Extra duty one piece design. Non-metallic. UV rated. For outdoor application.

CATALOG NUMBER	UPC/DCI/NAED MFG #018997	RIGID, IMC PVC SIZE	EMT SIZE	STD PKG	DIM A	DIM B	DIM C
NM3100	54027	--	1/2	100	1.998	.825	1.385
NM3105	54028	1/2	--	100	2.221	.825	1.385
NM3110	54029	--	3/4	100	2.292	.825	1.385
NM3115	54030	3/4	--	100	2.455	.825	1.385
NM3120	54031	--	1	100	2.579	.825	1.385
NM3125	54032	1	--	100	2.885	.825	1.385



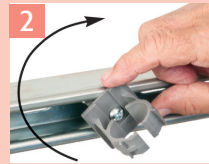
### FEATURES AND BENEFITS

- Listed for use in environmental air handling spaces per NEC code requirement 300.22(c)
- 2-1/2" to 4" hangers feature tabs with openings for the optional securing of a cable tie
- Accommodates thin walls, rigid conduit, PVC conduit, or copper
- Costs the same as a steel pipe hanger with bolt and nut
- Mounts horizontally or vertically
- UV rated for outdoor application
- Conduit snaps into place, locking automatically
- Corrosion resistant
- Stainless steel screw

### INSTALLATION INSTRUCTIONS



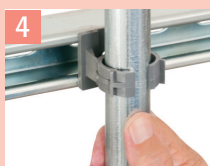
Insert QuickLatch into strut. The strut clip is already attached!



Twist QuickLatch to seat clip in strut.



Tighten screw for installation on strut.



Push conduit into QuickLatch to snap into place



Secure installation of conduit to strut



Easy screwdriver removal!

Scan For Video



## QuickLATCH™

Use it anywhere you would use a pipe hanger!

