

## Twin Screw All Purpose Connector

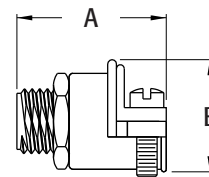
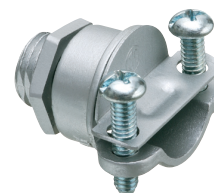
For Flex • AC • MCI • NM cable. Zinc die-cast.

CATALOG NUMBER	UPC/DCI/NAED MFG #018997	TRADE SIZE	KO SIZE	UNIT PKG	STD PKG	DIM A	DIM B	CABLE RANGE	END STOP DIAMETER
4200	04200	1/4	1/4	25	25	1.200	.900	.410 - .605	.380



MADE IN USA.

See chart on page E-27 for list of cable types. Concrete tight when taped.



### THE 4200

- Allows you to securely hold cables in low profile height fixtures with 1/4" knockouts.
- Fits both standard round 1/4" KO (17/32" diameter) and 5/8" diameter KO with flats.
- Is recommended for use with non-metallic sheathed cable, AC, flexible metal conduit, MC cable both steel and aluminum jacketed.
- Is primarily for use with low silhouette under cabinet fluorescent fixtures.
- Normally only one fitting is supplied with lighting fixtures. Additional connectors are needed when multiple fixtures are wired in-line.
- Is furnished with 1/4-18 n.p.s. fixture nut for easy tightening.

