

**"Take All" SNAP-TITE® Connectors**

With spring steel clip. Single screw saddle type. For NM • Flex • AC • ACG90 • AC90 • Teck90 • MCI steel and aluminum jacketed cables. Zinc die-cast.

SNAP-TITE® and SNAP2IT® products have been tested and listed by UL in accordance with UL's ground fault requirements. For additional information see page 8.

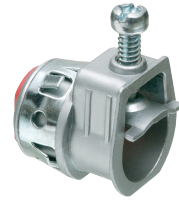
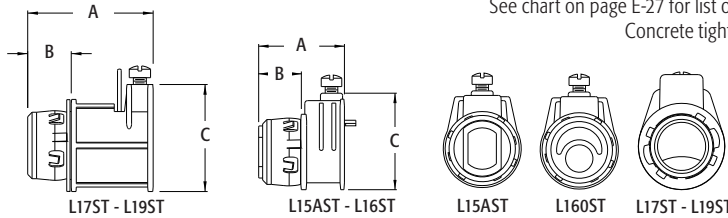
(See page E-1 for ring removal instructions.)

CATALOG NUMBER	UPC/DCI/NAED MFG #018997	TRADE SIZE	KO SIZE	UNIT PKG	STD PKG	DIM A	DIM B	DIM C	CABLE RANGE	END STOP DIAMETER
L15AST*‡	80044	3/8	1/2	50	500	1.096	.547	1.094	.460 - .585	.340 x .430
L16ST‡	80065	3/8	1/2	50	500	1.059	.510	1.215	.405 - .650	.400 x .580
L160ST‡	80064	3/8	1/2	50	500	1.032	.483	1.092	.370 - .690	.312
L17ST	33905	1/2	1/2	50	250	1.507	.482	1.424	.630 - .890	.620
L18ST	33915	3/4	3/4	25	125	1.495	.510	1.758	.820 - 1.040	.818
L19ST	08650	1	1	25	125	1.714	.515	2.047	1.100 - 1.400	1.030



\*Provided with insulated throat.  
 †Listed for flexible cord.  
 ‡Also for MCI-A cable. See page E-30 and E-31 for MCI-A cable ranges.  
 See chart on page E-27 for list of cable types.  
 Concrete tight when taped.

**PATENTED.**



L15AST



L16ST

FLEX • AC • MC