

# SNAP<sup>2</sup>IT<sup>®</sup> Duplex Connectors with Insulated Throat

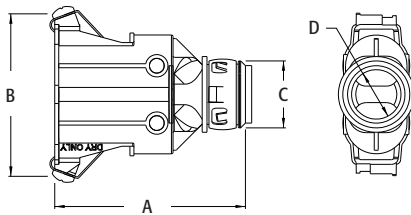
Zinc die-cast. For AC • MCI-A • HCF steel and aluminum cable • Flexible metal conduit steel and aluminum (regular and reduced wall) • MCI cable • Continuous corrugated aluminum • MC-PCS cable • ACG90 • AC90.

SNAP-TITE<sup>®</sup> and SNAP2IT<sup>®</sup> products have been tested and listed by UL in accordance with UL's ground fault requirements. For additional information see page 7.

CATALOG NUMBER	UPC/DCI/NAED MFG #018997	TRADE SIZE	KO SIZE	UNIT PKG	STD PKG	DIM A	DIM B	DIM C	DIM D	CABLE RANGE
383810AST	10937	3/8	1/2	25	100	2.467	2.035	.840	.624	(2) .370 - .490
404010AST	40533	3/8	1/2	25	100	2.467	2.115	.840	.624	(2) .405 - .612
505010AST	50720	1/2	3/4	25	25	3.054	2.717	1.058	.810	(2) .650 - .850



Provided with red tinted inside clip so you can tell the difference between a 383810AST & 404010AST. CSA Listed with anti-short bushing ONLY. Refer to chart on page E-27 for list of cable types. See page E-30 and E-31 for MCI-A cable ranges. Concrete tight when taped. **PATENTED.**



For the **WIDEST TOTAL CABLE RANGES**

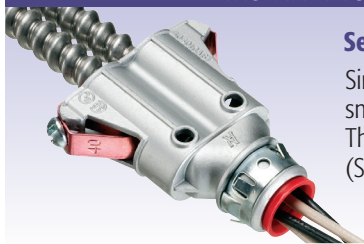


383810AST



404010AST

## INSTALLATION INSTRUCTIONS



**Secure hold—Easy cable insertion!**  
Simply snap the cable into the fitting and snap it into the box...no tools needed! The screw only holds the clip in place. (See page E-1 for ring removal instructions.)

**LISTED SNAP2IT™ CONNECTORS FOR NEW MC-PCS CABLE**  
Lighting & Low Voltage circuits in the same cable

FLEX • AC • MC